

Crossroads

The Newsletter of Benner Township

SPRING 2010

VOL. 53 Issue 2010-1

Inside this issue:

Page 1

- *Spring Bulk Pick Up
- *Spring Brush Collection

Page 2

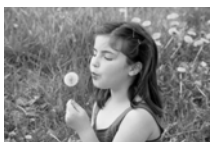
- *Fire Service
- *Vernal Pool Management Plans Available
- *Fall Festival

Page 3

- *Halloween Volunteers Needed
- *Summer Park & Rec
- *Household Hazardous Waste Clean Up
- *Spring Creek Clean Up

Page 4

- *Spring Bulk Pick Up (continued from Page 1)



Spring Bulk Pick Up May 17—21 On Your Regular Trash Day

*Do you have questions about what will and will not be collected?
Please call: **Veolia Environmental Services at 237-3713***

IN ORDER TO AVOID HAVING ITEMS LEFT BEHIND, RESIDENTS SHOULD FOLLOW THESE IMPORTANT GUIDELINES:

All items **must** be at the curb by 7:00 AM on regular trash pick-up day. *Customers with door service must place bulk waste items at the CURB; bulk items will NOT be collected at the door.*

Items **must** be properly prepared – see preparation notes below, LOOSE PILES WILL NOT BE COLLECTED.

Appliances and tires are collected by a separate truck, please keep these items separate from other bulk wastes: refrigerators, freezers, stoves, ovens, dishwashers, washing machines, dryers, air conditioners and water heaters. There is a limit of 1 of each type of appliance per household. Duplicate appliances will NOT be removed.

There is a limit of **10 tires** (no greater than 20 inches in diameter; rims removed) per household.

It is recommended NOT to use cardboard boxes as containers, because they are not sturdy enough to lift if they are overfilled or if they get wet. Soggy or overfilled boxes and their contents will NOT be collected. Do NOT overfill collection containers – instead, distribute items into multiple containers.

(continued on back page)

Spring Brush Collection - April 19th—April 23rd

Benner Township will be conducting its "On Call" brush collection during the week of April 19th—23rd. To schedule a brush pick up, please call the office at 355-1419 and leave your address and phone number. Guidelines for brush collection are:

*Brush must be piled with cut ends of limbs in the same direction towards the street.

*Limbs must be cut to be able to be fed into the chipper. Limbs larger than 4 inches in diameter will not be collected.

*Do not tie brush in bundles.

*Stumps, old firewood, construction material, thorn bushes, grasses, grapevines and plant waste will not be picked up.

*Maintenance crews will not enter private property.

*Crews will spend no more than 20 minutes at one property. If your pile is too large to be chipped in 20 minutes, please make other arrangements.

*Do not pile brush in front of or block fire hydrants or storm drains.

*This collection is for trimming of bushes and trees, not for tree removal or site clearing.

Fire Service

Benner Township Supervisors continue to meet with leaders from Bellefonte, Spring and Marion Townships and the Bellefonte Fire Company to arrive at an agreement for long-term fire service. On March 24, the parties agreed to establish a task force to study regional service. The Walker Township, Pleasant Gap and Howard Fire Companies will be asked to participate in this effort. The task force will assess a variety of issues, with the ultimate goal of establishing appropriate, cost-effective quality fire service for the entire Nittany Valley Region.

Existing fire service will continue as in the past, with the Bellefonte Companies servicing the majority of the Township, Pleasant Gap handling areas south of PA 150 and the Alphas servicing Benner Independent.

The board would like to thank all of the volunteer fire fighters for the excellent job that they do. These individuals donate countless hours in training, fund raising, and answering those emergency calls when seconds count - day or night.

Vernal Pool Management Plans for Private Lands



Do you have a vernal pool—a small temporary pond that dries up each year? Do you want to manage it to benefit wildlife? Because these small, sensitive wetland habitats can easily be disturbed or destroyed by human activities, the Vernal Pool Project of the Landowner Incentive Program provides *free* management recommendations that encourage best management conservation practices for seasonal wetlands. This service is available to private landowners in PA who have vernal pools on their properties. There are *no* fees or commitments associated with these recommendations and the advice is non-binding. If you would like more information, please contact Betsy Leppo of the Pennsylvania Natural Heritage Program at (717)948-3839 or Katie Ombalski of ClearWater Conservancy at (814)237-0400. The deadline to sign up is May 15th!



Fall Festival—Saturday—September 18th

The Benner Township Fall Festival is scheduled for Saturday, September 18th from 9:00 a.m. to 4:00 p.m. Some of our festival events will include the weirdest shaped pumpkin, pumpkin piling contest, pumpkin decorating, and of course, the largest pumpkin! The Festival will still have everyone's favorite craft and food vendors along with children's games and entertainment. Vendor space is still available. Are you crafty? For a \$15 booth space, this is the perfect place to sell your goods. Volunteers are always needed. Whether you can

help for a couple hours or all day, we would appreciate your help. Call us at 355-1419 and let us know what area you would like to help with. This is a great time for High School Students to get those community service hours in.

Crossroads

The purpose of *Crossroads* is to keep you informed about the issues facing Benner Township during this critical *Crossroads* in our development. We hope to inspire you to get involved in the Township that surrounds you.

Benner Township Municipal Building
1224 Buffalo Run Road
Bellefonte, PA 16823
(814) 355-1419
(814) 355-1448 (Zoning)
(814) 355-0719 (FAX)
www.centreconnect.org

Proud of our past, focusing on our future.

Planting season will be here before you know it. Why not try growing a giant pumpkin? Cash prizes will be awarded for the weirdest and largest pumpkins. (One entry per category—per person, please.)



Halloween Volunteers Needed

We need volunteers or groups interested in participating in this year's Haunted Trail held annually at the Buffalo Run Community Park in October.

If you have a creative mind, like to paint, want to be a scary character, or have any special talent you think would help with the trail, we need you! We need help creating sets and putting together the trail. Early preparations make the event a success. If you can help a little or a lot, any time spent is very much appreciated. Interested? Call us! 355-1419.

Any donations of Halloween items can be dropped off at the Benner Township building.



Summer Park & Rec.

Summer Park and Recreation is scheduled for June 28 through August 6 for children ages 5 through 12. Children need to be 5 by June 1 and no older than 12 by June 1. This year's theme is "Celebrating the Seasons". As a special treat this year, we will have a teacher coming to teach the kids the basics of Sign Language. Camp entrance fees remain the same this year—\$30 per child for Benner Township residents and \$120 per child for Non-residents. Camp registration forms will be distributed to the Benner Elementary School in April. If your child doesn't attend this school, please call the Township Building at 355-1419 and we will see that one is sent to you.



Household Hazardous Waste Collection Event



On Friday, April 30 and Saturday, May 1 the Centre County Solid Waste Authority, in cooperation with many other agencies, will be hosting an household hazardous waste collection event. This service is available free of charge to all Centre County residents.

Items NOT being accepted are: used motor oil, anti-freeze, batteries, tires, latex paint, radioactive or medical material, explosives or ammunition.

For additional information about the event, call the Centre County Solid Waste Authority at 238-7005 or visit their website at www.centrecountyrecycles.com

Household Hazardous Waste Collection Event

Centre Co. Solid Waste Authority

253 Transfer Road
Bellefonte, PA 16823

Friday, April 30
10:00 a.m.—6:00 p.m.

Saturday, May 1
9:00 a.m.—3:00 p.m.

Acceptable Materials

Insecticides	Weed Killers
Pool Chemicals	Cleaners
Poisons	Corrosives
Flammables	Oil based paints
Many other household chemicals	

Spring Creek Clean Up—Saturday - April 17th

The annual Watershed Clean-Up will be held on Saturday, April 17th. Benner residents interested in participating in the Clean-up should come to the Township Building between 8 a.m. and 9 a.m. Gloves, bags, bottled water, as well as a picnic lunch at 1 p.m. at the Millbrook Marsh Nature Center will be provided for all volunteers. If you are aware of an area that needs cleaned up, please call the Township office at 355-1419. *School Students needing community service . . . here is another opportunity for you.*



Need earned income tax forms? They can be downloaded at www.basd.net or pick them up at the Township office. They are in an envelope on the front door.

(Continued from Page 1)

Keep in mind that there are only 2 workers per collection vehicle during this special collection week! Items that cannot safely be lifted by 2 workers **WILL NOT BE COLLECTED.**

There are some items that either cannot fit on the collection vehicle or will damage the collection vehicle, and will therefore NOT be collected. Examples of such items include, but are not limited to: hot tubs, furnaces, cast iron items, pianos, organs, trailer/boat hitches. Residents must make their own arrangements for disposal of such items.

PROPER ITEM PREPARATION:

TIRES – must be removed from rims	CARPETING/PADDING – must be DRY, TIED, and CUT into 4 foot (max) lengths
APPLIANCES – doors must be removed	GLASS PANES – must be heavily taped or sealed in a box
WOOD/OLD LUMBER – must be CUT to 4 foot (max) length and 12 inch (max) width, and MUST be tied in bundles or placed in a can. Loose piles of wood & lumber (and anything underneath or mixed in with the pile) will NOT be collected.	
YES	The following items will be collected: furniture, bedding, appliances (see preparation information above), tires (see preparation information above), BUNDLED old lumber/homeowner-generated small project construction materials (see preparation information above), carpeting (see preparation information above), other oversized items too large to fit into a collection container.
NO	The following items will NOT be collected: contractor-generated construction materials , leaves, grass, soil/dirt, concrete, bricks, stones, railroad ties, propane tanks, liquid paints and solvents, batteries, dead animals, unprepared glass panes, unbundled wood/lumber, piles of loose debris or construction materials, tires other than passenger car tires (racing, tractor, etc.), items too large or too heavy for 2 workers to lift, items not prepared as per the above guidelines. For alternative disposal options, please call 238-7005.

ALL ITEMS THAT ARE ABLE TO BE CANNED/BAGGED MUST BE PLACED IN A BAG OR CAN, OR THEY WILL NOT BE COLLECTED.
LOOSE PILES OF DEBRIS (AS WELL AS ANY ITEMS LOCATED UNDERNEATH LOOSE PILES OF DEBRIS) WILL NOT BE COLLECTED.

Benner Township
1224 Buffalo Run Road
Bellefonte, PA 16823

