

# Crossroads

The Newsletter of Benner Township



## Announcing a Town Hall Meeting—May 29th

**We want to hear your opinions.**

### Inside this issue:

#### Page 1

- \*Town Hall Meeting
- \* Do you have your house and/or Business numbered?

#### Page 2

- \*Spring Brush Collection
- \*Watershed Clean Up Volunteers Needed
- \*Household Hazardous Waste Collection

#### Page 3

- \*Spring Bulk Pick Up
- \*Town Hall Meeting - continued.

#### Page 4

- \*Summer Park & Rec.
- \*Valentine Hill Road Closure



2013

There are many things happening in and around Benner Township that will effect us all in the future. In order to share some of these changes, the Board of Supervisors have scheduled a town hall meeting on May 29th beginning at 7 p.m. to be held at the Benner Elementary School. The Board would like to hear what you, the taxpayers, would like to see in the Township's future.

At some point, improvements/enlarging of the Municipal Building will become necessary as we are running out of space and the exterior is deteriorating. When this takes place, should we add a space that could be rented out for meetings/parties/gatherings? Do you think this is an important feature to be able to offer our community?

What about recreation and community parks? Updates on activities around Spring Creek Canyon and the newly formed Recreational Authority will be provided. Are there other amenities that you feel should be added to our parks? Should we consider building permanent restroom facilities? Install water fountains? Purchase additional playground equipment? Construct a walking trail?

For our property owners with on-lot septic systems, changes mandated by PA Department of Environmental Protection will require mandatory scheduled pumping of tanks and inspections of your on lot systems. These new regulations will affect approximately 425 properties in the township. More information on this will be included in upcoming issues of *CrossRoads*. If there is interest, an overview of the changes can be gone over at the meeting. *Continued on Page 3*

## Help Our Volunteer Fireman and EMS Help You . . .

### Please Number Your Home and/or Business

It has come to our attention, by the Volunteer Fireman who serve our Community, that a number of properties in the Township are not sufficiently marked for easy visibility while responding to an emergency. They are recommending the following:

- Use Arabic Numbers.
- Numbers should be a minimum height of 3" for residential properties and 6" for commercial properties.
- Numbers should be mounted in a secure fashion to the front wall or porch of the building so as to be clearly visible from the street.
- Make sure the numbers contrast the background that you are attaching them to for clearer visibility.
- Place numbers at least 30" above ground level and so that they are not blocked by trees, shrubs and other obstructions.

If you live at a property not visible from the roadway, they recommend that your numbers are placed upon a post, mailbox or other type of fixture of substantial nature conspicuous and visible from the street upon which the building fronts.

## Spring Brush Collection - Call for an appointment by April 26

Benner Township will be conducting its "On Call" brush collection during the week of April 29th. To schedule a brush pick up, please call the office at 355-1419 **no later than April 26th** for an appointment. Guidelines for brush collection are:

- \*Brush must be piled with cut ends of limbs in the same direction towards the street.
- \*Limbs must be cut to be able to be fed into the chipper. Limbs larger than 4 inches in diameter will not be collected.
- \*Do not tie brush in bundles.
- \*Stumps, old firewood, construction material, thorn bushes, grasses, vines and plant waste will not be picked up.
- \*Maintenance crews will not enter private property.
- \*Crews will spend no more than 20 minutes at one property. If your pile is too large to be chipped in 20 minutes, please make other arrangements.
- \*Do not pile brush in front of or block fire hydrants or storm drains.
- \*This collection is for trimming of bushes and trees, not for tree removal or site clearing.

## Household Hazardous Waste Collection Event—April 26 & 27

### Centre County Solid Waste Authority

238-7005

253 Transfer Road

Bellefonte, PA 16823

Friday, April 26  
10:00 a.m.—6:00 p.m.

Saturday, April 27  
9:00 a.m.—3:00 p.m.



More information can be found at  
[www.centrecountyrecycles.com](http://www.centrecountyrecycles.com)

### Acceptable Materials

Insecticides	Weed Killers
Pool Chemicals	Cleaners
Poisons	Corrosives
Flammables	Oil based paints
Many other household chemicals	

## Spring Creek Watershed Clean Up—Saturday - April 20th

### Crossroads

The purpose of *Crossroads* is to keep you informed about the issues facing Benner Township during this critical *Crossroads* in our development. We hope to inspire you to get involved in the Township that surrounds you.

Benner Township Municipal Building  
1224 Buffalo Run Road  
Bellefonte, PA 16823  
(814) 355-1419  
(814) 355-1448 (Zoning)  
(814) 355-0719 (FAX)  
[www.centreconnect.org](http://www.centreconnect.org)

*Proud of our past, focusing on our future.*

The annual Spring Creek Watershed Clean-Up will be held on Saturday, April 20th. Anyone wishing to help out should come to the Township Building (1224 Buffalo Run Road) Saturday morning (8 a.m.) for glove and bag supplies. If you are aware of an area that needs cleaned up or want to volunteer please call Genie Robine at 355-2530.

**Attention High School Students**—If you are in need of community service hours, here is an opportunity to get some.

All volunteers are invited to a "Thank You!" picnic lunch sponsored by ClearWater at the Spring Creek Park after the CleanUp. Hot dogs and snacks will be provided.



**Spring Bulk Pick Up  
May 13—17 *On Your Regular Trash Day***

*Do you have questions about what will and will not be collected?  
Please call: **Advanced Disposal Services at 237-3713***

IN ORDER TO AVOID HAVING ITEMS LEFT BEHIND, RESIDENTS SHOULD FOLLOW THESE IMPORTANT GUIDELINES:

All items **must** be at the curb by 7:00 AM on regular trash pick-up day. *Customers with door service must place bulk waste items at the CURB; bulk items will NOT be collected at the door.*

Items **must** be properly prepared – see preparation notes below, LOOSE PILES WILL NOT BE COLLECTED.

Appliances and tires are collected by a separate truck, please keep these items separate from other bulk wastes: refrigerators, freezers, stoves, ovens, dishwashers, washing machines, dryers, air conditioners and water heaters. There is a limit of 1 of each type of appliance per household. Duplicate appliances will NOT be removed.

There is a limit of **10 tires** (no greater than 20 inches in diameter; rims removed) per household.

It is recommended NOT to use cardboard boxes as containers, because they are not sturdy enough to lift if they are overfilled or if they get wet. Soggy or overfilled boxes and their contents will NOT be collected. Do NOT overfill collection containers – instead, distribute items into multiple containers.

Keep in mind that there are only 2 workers per collection vehicle during this special collection week! Items that cannot safely be lifted by 2 workers WILL NOT BE COLLECTED.

There are some items that either cannot fit on the collection vehicle or will damage the collection vehicle, and will therefore NOT be collected. Examples of such items include, but are not limited to: hot tubs, furnaces, cast iron items, pianos, organs, trailer/boat hitches. Residents must make their own arrangements for disposal of such items.

**PROPER ITEM PREPARATION:**

TIRES – must be removed from rims	CARPETING/PADDING – must be DRY, TIED, and CUT into 4 foot (max) lengths
APPLIANCES – doors must be removed	GLASS PANES – must be heavily taped or sealed in a box
WOOD/OLD LUMBER – must be CUT to 4 foot (max) length and 12 inch (max) width, and <b>MUST be tied in bundles or placed in a can.</b> Loose piles of wood & lumber (and anything underneath or mixed in with the pile) will NOT be collected.	
<b>YES</b>	The following items will be collected: furniture, bedding, appliances (see preparation information above), tires (see preparation information above), <b>BUNDLED old lumber/homeowner-generated small project construction materials</b> (see preparation information above), carpeting (see preparation information above), other oversized items too large to fit into a collection container.
<b>NO</b>	The following items will <b>NOT</b> be collected: <b>contractor-generated construction materials</b> , leaves, grass, soil/dirt, concrete, bricks, stones, railroad ties, propane tanks, liquid paints and solvents, batteries, dead animals, unprepared glass panes, unbundled wood/lumber, piles of loose debris or construction materials, tires other than passenger car tires (racing, tractor, etc.), items too large or too heavy for 2 workers to lift, items not prepared as per the above guidelines. For alternative disposal options, please call 238-7005.

**ALL ITEMS THAT ARE ABLE TO BE CANNED/BAGGED MUST BE PLACED IN A BAG OR CAN, OR THEY WILL NOT BE COLLECTED. LOOSE PILES OF DEBRIS (AS WELL AS ANY ITEMS LOCATED UNDERNEATH LOOSE PILES OF DEBRIS) WILL NOT BE COLLECTED.**

**✓ Mark your calendars—Fall Bulk Pick up is scheduled for the week of October 14—18 on your regular garbage day.**

*Continued from Page 1:*

Is there anything else that you feel the Township could do to improve the quality of life in the Township? We want to hear from you! Please mark your calendar and plan to join us for this meeting. If you are unable to attend, we welcome you to jot down your thoughts and submit them to the township office at 1224 Buffalo Run Road, Bellefonte, PA 16823.

# Crossroads

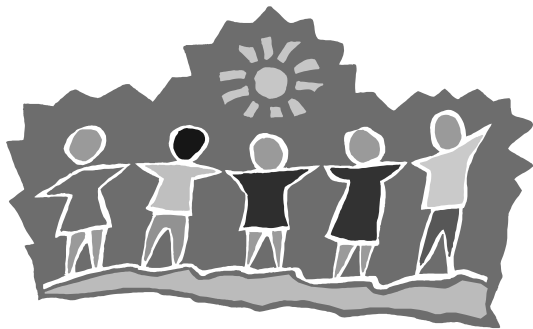
Benner Township  
1224 Buffalo Run Road  
Bellefonte, PA 16823

**ADDRESS SERVICE REQUESTED**

PRESORTED STANDARD  
U.S. POSTAGE  
PAID  
STATE COLLEGE, PA  
PERMIT NO. 213

## Summer Park & Rec.

Summer Park and Recreation is scheduled for **June 24th through August 2nd** for children ages 5 through 12. Children need to be **5 by June 1 and no older than 12 by June 1**. Camp entrance fees remain the same this year—\$30 per child for Benner Township residents and \$120 per child for Non-residents. Camp registration forms will be available to download on the Township's home page in May. If you don't have the ability to download documents, please call the Township Building at 355-1419 and we will see that one is sent to you. To assist in planning, we are asking that registrations be returned to the township by June 10th.



## Valentine Hill Road to Close

It has been in the works since 2006 and FINALLY this summer Valentine Hill Road (formerly known as Beezer Hill Road) will be closed off at the intersection with the Benner Pike. This road closure was a condition of the Amberleigh Lane traffic signal permit with PennDot. This work should be completed by June 30th. The roads in the Amberleigh Subdivision are also scheduled to be completed.

